

Fiber Optic Patch Cord & Pigtail



OVERVIEW

Fiber optic patch cord, also called fiber optic jumper or patch cables. It is one of the most commonly used components in fiber optic network. It can make a connection between a Network interface, or NETWORK port, and a media segment, or to directly connect stations and Hub ports together.

As a professional manufacturer of Fiber Optic, we produce and offer kinds of fiber patch cord, such as FC, SC, ST, LC, MU, MTRJ, MPO, E2000 series, available for PC/UPC/APC version, provide with SM, MM, OM3 fiber cable, simplex and duplex types, 0.9mm, 2.0mm, 3.0mm cable diameter for choosing.

We also accept OEM service to meet different customer's requirements, custom any type, any color, any length, anything in Kimtech!

KEY FEATURES

Optical Performance:

- Low insertion loss and reflectance
- High dense spaces
- High return loss, credibility and stability
- Good in repeatability and exchangeability

Standards Compliance

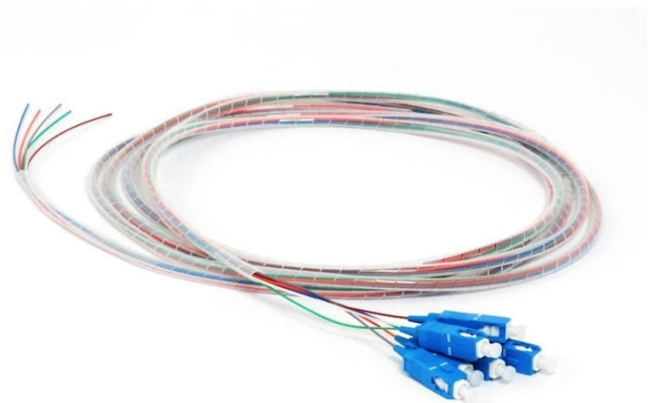
- Meets IEC Standard 61754
- Meets TIA/EIA 604-5 Type MPO
- Telcordia & RoHS

Material

- Top quality zirconia ferrule
- High quality cable

APPLICATIONS

- Telecommunication
- CATV / Metro
- Active device termination
- LANs / WANs
- Premise installations
- Data processing networks
- Test equipment
- Premise installations



SPECIFICATION

Specification	Unit	FC, SC, LC				ST, MU			MT-RJ, MPO			E2000	
		SM			MM	SM		MM	SM		MM	SM	
		PC	UPC	APC	PC	PC	UPC	PC	PC	UPC	PC	PC	APC
Insertion Loss	dB	≤0.3	≤0.2	≤0.3	≤0.2	≤0.3	≤0.2	≤0.2	≤0.3	≤0.2	≤0.2	≤0.3	≤0.3
Return Loss	dB	≥45	≥50	≥60	≥30	≥45	≥50	≥30	≥45	≥50	≥35	≥55	≥75
Wavelength	nm	1310, 1510				1310, 1510			1310, 1510			1310, 1510	
Interchangeability	dB	≤0.2				≤0.2			≤0.2			≤0.2	
Vibration	dB	≤0.2				≤0.2			≤0.2			≤0.2	
Operating Temperature	°C	-40~75				-40~75			-40~75			-40~75	
Storage Temperature	°C	-45~85				-45~85			-45~85			-45~85	
Cable Diameter	mm	φ3.0, φ2.0, φ0.9				φ3.0, φ2.0, φ0.9			φ3.0, φ2.0, φ0.9			φ3.0, φ2.0, φ0.9	

Get more info, please contact us

Email: Sales@kimtech.co.th, kimtech@truemail.co.th

Tel: 02-728-2747, 087-929-3178

Fax: 02-728-2745

